

The AV82-1600 Dual Airvac is a low cost, compact yet efficient lights recovery separation systems comprising an adjustable vacuum head unit fitted to the stockpile conveyor or screenbox. Suitable for removal of plastic or lights contamination from Compost, Bark, skip waste rejects and recycled aggregates.

The AV82 features 2 of 112m³/min. (3950CFM) Impeller-type suction fans, 51.6-53.7Kw Yamnar diesel engine, robust frame with fork/pallet truck manoeuvrability, Integral telescopic legs within the chassis to adjust the height of the Airvac to the conveyor belt it is working on. This allows a shorter length of hose to be used & optimises the machines performance

POWER UNIT

Drive	Diesel
Type	Yanmar 4TNV98CT Tier 4 Turbo
Power	51.6-63.7kW (72HP max)
Fan Displacement (max)	2 of 112m ³ /min
Impeller Speed	2100rpm
Fuel Tank Capacity	225L
Belts	SPB16N 1800
Pulleys	250mm SPB 4 Groove 200mm SPRB 2 Groove

ELECTRICALS

Emergency Stops	3 of
Chassis Cabling	Armoured cable
Start Siren	10 sec delay
Engine warnings	Low oil pressure, High engine temp Fuel contamination

Cooled EGR system
Common rail system
Direct injection combustion
ECU integrated control

DIMENSIONS

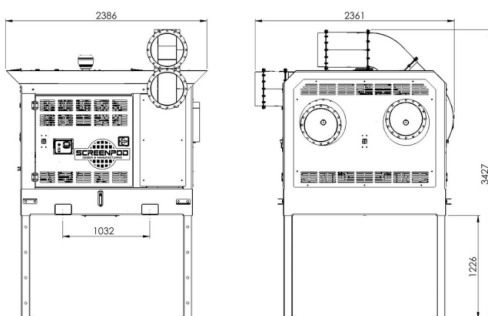
	Transport
Length	2386mm
Width	2361mm
Height	2224mm
Weight (approx.)	2900kg

SAFETY FEATURES

Lifting hooks built into frame
Low maintenance vee-belt drive design
Oversized radiator with blower fan to reduce dust intake
Pre-cleaner fitted as standard to the air intake
Large doors for easy service & maintenance
External belt adjustment points
Manual or Electronic engine speed adjustment
Engine safety shutdown systems
Full safety guarding for nip points
CE & Tier 4 compliant
Full range of adjustable vacuum heads to suit all applications
Independent balance valves on each fan



WORKING DIMENSIONS:



The material in this document is for information only and is subject to change without notice. Photographs are for illustrative purposes only; some or all of the machines in the illustrations may be fitted with optional extras