

YOU CAN'T MANAGE WHAT YOU DON'T MEASURE! ONLINE VISIBILITY IN REAL TIME

The No. 1 choice worldwide for material scanning, Sensortechnik Optical Belt Weighing Scales lead the pack in precision, innovation and accuracy. Revolutionising the way material measurement is handled and monitored, from aggregates to waste & recycling, stationary to mobile equipment.

Sensortechnik OBS are a contact free volumetric scanner using the latest laser technology, it effectively scans the material crossing the belt with a measurement accuracy of 1mm variance. You can rely on precise production data, unaffected by external conditions.

Beyond its practical measurement application, it is truly an operations management tool. Through visualizations and dashboards, Sensortrack provides visibility and in-depth quantifiable performance metric, which you can use to power business and operation decisions. Know exactly how much material your staff and equipment is processing daily, essentially acting as the Owners " eyes" on site, with real time updates. Giving you the ability to monitor production and operations issues before they cost you money and lead to downtime. As your data builds you can spot trends, catch wear replacement before they impact your production.

MAIN ADVANTAGES:

- **Contactless** process through electronic optical sensor
- **Utmost precision** during high speed measurement of bulk volume
- **Supports** stationary, mobile and various types of conveyors
- **Unaffected** by wind, weather, sand, vibration or temperature
- No moving parts – therefore **no wear** and **maintenance free**
- Storage of **measured values** up to one year
- **High longevity** economically and environmentally friendly
- **Onetime Calibration** a once off operation with quick installation

OPERATIONAL MANAGEMENT ADVANTAGES:

- **Set goals** and production benchmarks
- **Know exactly** when your equipment starts and stops each day
- **Increase** operation profitability
- Verify equipment **productivity**
- **Manage** Inventory control
- **Manage** multiple sites



*48" model shown here



01

Specifications

01. VOLUME SCAN HEAD

Power:

24V DC +/- 20%, 5 A

Operating Temperature:

-45°C (-49°F) to + 70°C (158°F)

Dimensions:

Standard sizes range from 24" up to 78" conveyor frame widths.

Com-Ports:

Var 1: RS-422 (4 line)

Var 2: Bluetooth (class 1)

Var 3: Analog Output (4-20mA)

Measuring Rate:

3200 frames / second

Storage Capacity:

Production data over 1 year

02



02. ADJUSTABLE HOLDING FRAME

Accommodates conveyor frame widths ranging from 24" up to 78" . Aluminum frame easy mount and dismount (Fixed with only 4 bolts). Includes height adjustment capabilities.



03

03. PRINTER

Printer (Type H-55BT)

Weight:

350g (0.77 lbs)

Dimensions:

87 x 110 x 58mm (3.43" x 4.33" x 2.28")



04

04. SMARTPHONE

Weight:

200g (0.44lbs)

Dimensions:

146 x 74.4 x 12.6mm (5.75" x 2.93" x 0.50")

How Sensortechnik works



Mobile

The sensor scans and measures the material on the conveyor, and in real-time, wirelessly transmits the data to your handheld device. From the handheld you can set Customer and Material profiles and configure scan settings. With a touch of a button you can download, print or email your measurement results directly to your office or main computer. Forget to email or print your data results? Have no fear, the Sensortechnik unit itself will store a full year of data. Simply download to your handheld device at anytime.

PLC Integration

For organizations operating on a programmable logic controller (PLC) or an in-house BI reporting tool, the scale has seamless integration capabilities offering flow rate control and continuous monitoring. The connection can be hardwired or configured across a wireless network. Information can be directly downloaded into internal databases for data mining. This flexibility allows user to select the method of setup and communication which suites their application best.

THE PROCESS

1. Measurement of the cross-profile of the material on the conveyor belt

2. Measurement of the feed rate of the conveyor belt by an inductive sensor



3. **Mathematical volume data calculation through our developed algorithm to produce an accurate result of material data.**

real-time and **wireless** transmission of the data via Bluetooth to your handheld device



internal storage of measured data up to one year

THE PROCESS



Measured values are transmitted as excel spreadsheets.

Data may be downloaded, printed on site or mailed directly to your office.

Upon request, our technicians can access the smartphone to carry out remote maintenance.

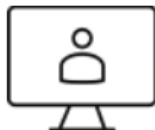
- Review your sites production
- Address operation performance issues as they happen
- See exactly when the equipment started, when it was down

SENSORTRACK

	Start	Stop	Customer	Material	Volume	Spec. Weight	Factor	Diameter	Timestamp
1	14.12.2016 15:54	14.12.2016 16:55	SALT MINE	Crude sa t	17,196.8	1,150	100	1.257	19.12.2016 07:38:39 039
2	14.12.2016 08:03	14.12.2016 13:29	SALT MINE	Crude sa t	315.52	1,150	100	1.257	19.12.2016 07:38:39 039
3	13.12.2016 13:29	13.12.2016 16:50	SALT MINE	Crude sa t	371.1	1,150	100	1.257	19.12.2016 07:38:39 039
4	13.12.2016 08:09	13.12.2016 08:10	SALT MINE	Crude sa t	52.96	1,150	100	1.257	19.12.2016 07:38:39 039
5	12.12.2016 14:10	12.12.2016 08:11	SALT MINE	Crude sa t	143.44	1,150	100	1.257	19.12.2016 07:38:39 039



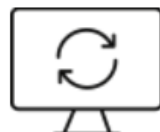
Secure, location - independent Access



Login Service



Production Results

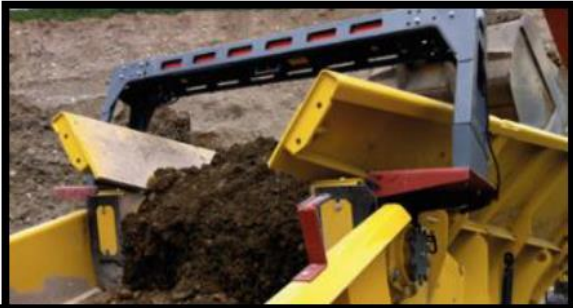


Online Data Backup



Online Access to Production Data

**THE OPTICAL BELT SCALE –
PROVEN SUCESSFUL IN NUMEROUS INDUSTRIES**



SOIL AND MULCH



BIOMASS



WASTE AND RECYCLING



AGGREGATE

